

The Construction Range

Combining the power needed for demanding jobs and the versatility to work in any condition, the Kubota Construction Range is ready to take on any challenge. Designed and built to produce cost-effective results time after time, Kubota construction machinery continues to extend its reputation. With outstanding performance and impressive durability with a legendary reputation for reliability, service and excellent residual values, find out why Kubota is the unbeatable choice.

Also available:

■ **Groundcare Range Guide** ■ **Agricultural Range Guide**

Your authorised Kubota dealer is:

For more information:

Call: **01844 268 000**

Email: **kuk_g.diggers@kubota.com**

Visit: **www.kubota.co.uk**



Every effort has been made to ensure that the contents of this publication were accurate and up-to-date at the time of going to press. All rights reserved. No part of this publication may be reproduced in any form or by any means, without the prior written permission of Kubota (U.K.) Limited.

Published June 2018 CST 06/18

Kubota (U.K.) Limited, Dormer Road, Thame, Oxfordshire OX9 3UN

For Earth, For Life
Kubota



Kubota
No.1
for mini excavators
0-8 tonne in the UK



www.kubota.co.uk

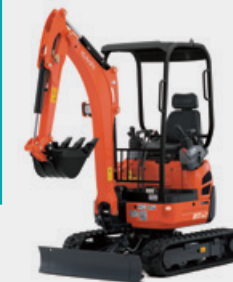
CONSTRUCTION MACHINERY

From leading-edge engineering to innovative technology our construction range benefits from an earned reputation for legendary reliability, outstanding performance, advanced security and excellent residual value. Designed and built to produce cost-effective results time after time.

Almost all the range is powered by Kubota engines* – proven, reliable, and clean running. These highly durable engines are designed to provide maximum fuel efficiency, minimal noise and vibration, and have low emission levels that meet all environmental regulations.

Contents

**MINI
EXCAVATORS**
P/07



**TRACK
DUMPERS**
P/30



**WHEEL
LOADERS**
P/42



*The KC70-4P is powered by a Honda engine.



**Built to
perform
without
compromise.**

www.kubota.co.uk

It's what goes into a Kubota that helps you to get so much out. Designed to be a workhorse, but with thoroughbred engineering behind every design decision.

We put more in, so you get more out



www.kubota.co.uk

EXCAVATORS

Kubota's tracked mini excavators are universally known and respected for their reliability, durability and appetite for hard work.

Kubota is No. 1 for mini excavators 0-8 tonne in the UK – trusted and used from building sites to highways, and forestry to major construction projects. Designed and built to produce cost-effective results time after time.



Outstanding Performance

As well as Kubota's renowned quality and reliability, every Kubota benefits from leading edge engineering, innovative technology, exceptional fuel economy and efficient operation. You can also count on our unrivalled reliability and first-class service from our dealer network and after sales proposition.

#Kubota innovation

AUTO IDLE SYSTEM:

Reduce RPM. Better efficiency.

Save fuel with Kubota's Auto Idle which automatically reduces engine RPM when high engine speed is not required. When the control levers are in neutral for more than four seconds, the engine RPM idles. If you move any control lever, the engine RPM immediately returns. This innovative feature reduces noise and emissions, whilst also lowering operating cost.

NB: Only available on some excavators - contact your local dealer for more information.





www.kubota.co.uk

1-1.5 TONNE

K008-3

Incredibly compact and highly reliable, the efficient Kubota K008-3, with its enhanced operator protection, is the choice for tough jobs where space is limited.



Engine

Highly trusted, efficient Kubota E-TVCS diesel engine with unique Three Vortex Combustion System that reduces exhaust emissions, noise and vibration.



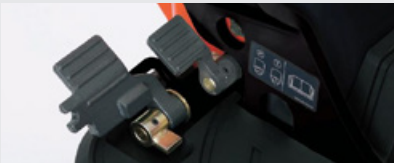
Versatility

Hydraulically adjusted track gauge reduces down to 700mm (K008-3) and 750mm (U10-3/U10-3SL), allowing them to fit through most doorways. The U10-3 also features Kubota's zero tail swing for excellent stability, smooth control and operation in confined spaces.



Hydraulics

To reduce the risk of damage, the service port pipework is hidden inside the boom and the service ports are conveniently located at the end of the boom.



Operator area

Two-speed travel pedal (U10-3 only) for easy switch between high and low speeds. Walk through operator space.

U10-3/ U10-3 SL

Ultra-compact with enhanced operator protection, the efficient and easy-to-use Kubota U10-3, with zero tail swing is the mini excavator you can count on to get the job done. Ideal for jobs where space is limited. The U10-3 SL version (with side levers) also offers optimal comfort to the operator.



Performance

Quick release bucket pins for speedy change of attachments without tools.



Safety

Standard Equipment:
Foldable ROPS (Roll Over Protective Structure).



MICRO RANGE/ K008-3/ U10-3/ U10-3SL

Technical overview

			K008-3	U10-3/ U10-3SL
Machine weight	Canopy	kg	980	1120
	Operating weight	kg	1055	1195
Bucket capacity, std. SAE/CEC		m ³	0.022/0.018	0.024/0.020
Engine	Model		D722-BH-5	D722-BH-6
	Type		Water-cooled, diesel E-TVCS	Water-cooled, diesel E-TVCS (Economical, ecological type)
	Output	PS/rpm	10.2/2050	10.2/2050
	ISO9249	kW/rpm	7.4/2050	7.4/2050
	No of cylinders		3	3
Overall length		mm	2750	2980
Overall height	Cab	mm	-	-
	Canopy	mm	2230	2230
Hydraulic pumps	P1, P2	Gear type	Gear type	Gear type
	Flow rate	ℓ/min	10.5 + 10.5	10.5 + 10.5
	Hydraulic pressure	MPa (kgf/cm ²)	16.7 (170)	17.6 (180)
	P3		-	Gear type
	Flow rate	ℓ/min	-	3.1
Dig depth	Hydraulic pressure	MPa (kgf/cm ²)	-	2.9 (30)
		(mm)	1720	1800
Max. reach at ground level		(mm)	3020	3330
Max. digging force	Arm	kN (kgf)	4.5 (460)	5.4 (550)
	Bucket	kN (kgf)	9.8 (1000)	10.4 (1060)
Auxiliary circuit	Max. Flow rate	ℓ/min	21.0	21.0
	Hydraulic pressure	MPa (kgf/cm ²)	170	180
Fuel tank capacity		ℓ	12	12
Max. travelling speed	Low	km/h	2.0	2.0
	High	km/h	-	4.0



www.kubota.co.uk

1.5 TONNE

KX015-4

The KX015-4 mini excavator offers a powerful digging force and a wide working range, making it ideal for roadsides or residential areas.



KX016-4

The KX016-4 mini excavator delivers a powerful digging force and a wider working range, offering enhanced accessibility to sites.



1.5 TONNE / KX015-4 / KX016-4

Technical overview

		KX015-4	KX016-4
Machine weight	Cab/canopy (kg)	1470/1420	1540/1490
Operating weight	Cab/canopy (kg)	1545/1495	1615/1565
Bucket capacity, std SAE/CECE	(m³)	0.035	0.035
Engine	Model	D782-BH	D782-BH
	Type	Water-cooled, diesel, E-TVCS	Water-cooled, diesel, E-TVCS
	Output (PS/rpm)	13/2300	13/2300
	ISO9249 (kW/rpm)	9.6/2300	9.6/2300
	No of cylinders	3	3
Overall length	(mm)	3710	3710
Overall height	Cab (mm)	2350	2350
	Canopy (mm)	2330	2330
Dozer size	(width v height) mm	990 × 230	990/1240 × 230
Hydraulic pumps	P1, P2	Variable displacement pump	Variable displacement pump
	Flow rate (ℓ/min)	16.6 × 2	16.6 × 2
	Hydraulic pressure MPa - (kgf/cm²)	20.6 (210)	20.6 (210)
	P3	Gear type	Gear type
	Flow rate (ℓ/min)	10.4	10.4
Dig depth	Hydraulic pressure MPa - (kgf/cm²)	20.1 (205)	20.1 (205)
	(mm)	2250	2250
	(mm)	3730	3730
Max. reach at ground level	(mm)	3730	3730
	(mm)	3730	3730
Max. digging force	Arm (kN - kgf)	7.3 (740)	7.3 (740)
	Bucket (kN - kgf)	12.7 (1300)	12.7 (1300)
Auxiliary circuit	Max. Flow rate (ℓ/min)	27	27
	Hydraulic pressure MPa - (kgf/cm²)	20.6 (210)	20.6 (210)
Fuel tank capacity	(ℓ)	21	21
Max. travelling speed	Low (km/h)	2.1	2.1
	High (km/h)	-	3.8



Engine

Kubota's D782 13 PS diesel engine: the power to maximise digging and lifting performance, delivering minimised noise and vibration, whilst meeting all current emission regulations.



Hydraulics

The boom cylinder has been positioned on the topside of the boom to prevent cylinder damage.



Performance

Powerful and well-balanced arm and bucket for faster and more efficient digging, even in the toughest of conditions.



Versatility

The KX015-4 has a fixed track gauge. The KX016-4 has variable undercarriage: 990mm tracks can extend to 1240mm with two speed tracking.



Cab

Large cab with easy entry and exit, flat floor with ample legroom, adjustable suspension seating and a wide door. Kubota Intelligent Control System also features a user-friendly digital panel.



Safety

Standard Equipment: ROPS (Roll Over Protective Structure) / TOPS (Tip-Over Protective Structure) OPG (Operator Protective Guard, Level 1).





www.kubota.co.uk

1.5-2.0 TONNE

U17-3α

The advanced U17-3α offers superior versatility and performance to take on almost any task. Also available as a High Spec version (HI), with AUX 1 proportional flow control.



Engine

Highly trusted, efficient Kubota E-TVCS diesel engine with unique Three Vortex Combustion System that reduces exhaust emissions, noise and vibration.



Versatility

The U17-3α features Kubota's zero tail swing for excellent stability, smooth control and operation in confined spaces. Hydraulically adjusted track gauge reduces down, from 1240 to 990mm to fit through most doorways.



Hydraulics

The boom cylinder has been positioned on the topside of the boom to prevent cylinder damage. Travel motor hoses are enclosed within the track frame for further protection.



Canopy

Canopy offering easy entry and exit with a flat floor, plenty of legroom and an adjustable suspension seat. Kubota Intelligent Control System features a user-friendly digital panel, which puts convenience and functionality at the operator's finger tips.



Performance

Excellent dig depth and reach can be further enhanced with the optional long arm version, combined with the zero tail swing that can complete a variety of jobs productively.



Safety

Standard Equipment: ROPS (Roll Over Protective Structure) / FOPS (Falling Objects Protective Structure Level 1).

1.5-2.0 TONNE/U17-3α

Technical overview

		U17-3α
Machine weight	Standard/Long Arm (kg)	1575/1625
Operating weight	Standard/Long Arm (kg)	1650/1700
Bucket capacity, std. SAE/CECE	m ³	0.04
Engine	Model	D902
	Type	Water-cooled, diesel
	Output (PS/rpm)	16/2300
	ISO9249 (kW/rpm)	11.8/2300
	No of cylinders	3
Overall length	Standard/Long Arm (mm)	3545/3550
Overall height	mm	2340
Dozer size	(width v height) mm	990/1240 × 265
Hydraulic pumps	P1, P2	Variable displacement pump
	Flow rate (ℓ/min)	17.3 × 2
	Hydraulic pressure (MPa - kgf/cm ²)	21.6
	P3	Gear pump
	Flow rate (ℓ/min)	10.4
	Hydraulic pressure (MPa - kgf/cm ²)	18.6
Dig depth	(mm)	2310 (2460 long arm version)
Max. reach at ground level	(mm)	3840 (3970 long arm version)
Max. digging force	Standard/Long (kN - kgf)	8.5(865) / 7.3 (744)
	Bucket (kN - kgf)	15.2(1550)
Auxiliary circuit	Max. Flow rate (ℓ/min)	27.7
	Hydraulic pressure (MPa - kgf/cm ²)	18.6
Fuel tank capacity	ℓ	19
Max. travelling speed	Low (km/h)	2.2
	High (km/h)	4.1



www.kubota.co.uk

1.5-2.0 TONNE

KX018-4

The KX018-4 delivers a powerful digging force and a wider working range that rivals higher-end excavators, and offers enhanced accessibility and manoeuvrability.



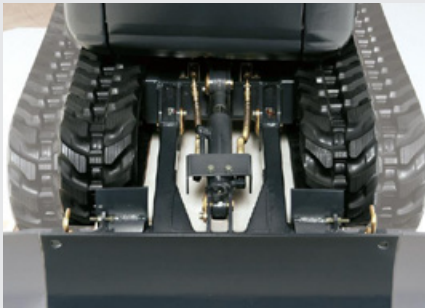
KX019-4

The KX019-4 is built for faster and efficient digging, even in the toughest of conditions.



Engine

Powered by a Kubota D902 16 PS diesel engine, engineered with the power to maximise digging and lifting performance. This machine delivers minimised noise and vibration, meeting all current engine emission regulations.



Versatility

On both the **KX018-4** and **KX019-4**, tracks adjust between 990mm to 1300mm to easily navigate narrow spaces or optimise stability when using heavy attachments.

Hydraulics

Boom cylinder positioned topside of the boom to prevent cylinder damage.



Cab

A spacious cab, offering easy entry and exit, with a flat floor, plenty of legroom and an adjustable suspension seat. Kubota Intelligent Control System features a user-friendly digital panel, which puts convenience and functionality at the operator's finger tips.

The **KX019-4** features a thumb operated, proportionally controlled auxiliary circuit with a maximum oil flow setting as standard.



Performance

Powerful and well-balanced arm and bucket for faster and efficient digging even in the toughest of conditions. The auto-shift system on both machines allows for smooth automatic travel shift from high to low, depending on traction effort and terrain.

Safety

Standard Equipment:
ROPS (Roll Over Protective Structure) / TOPS (Tip-Over Protective Structure) OPG (Operator Protective Guard, Level 1).

1.5-2.0 TONNE /KX018-4 /KX019-4

Technical overview

		KX018-4	KX019-4
Machine weight	Cab/canopy (kg)	1720/1620	1780/1680
	Operating weight	1795/1695	1855/1755
Bucket capacity, std. SAE/ CECE	(m³)	0.04	0.04
Engine	Model	D902-BH	D902-BH
	Type	Water-cooled, diesel, E-TVCS	Water-cooled, diesel, E-TVCS
	Output (PS/rpm)	16/2300	16/2300
	ISO9249 (kW/rpm)	11.8/2300	11.8/2300
	No of cylinders	3	3
Overall length	(mm)	3710	3860
Overall height	Cab (mm)	2350	2350
	Canopy (mm)	2330	2330
Dozer size	(width v height) mm	990/1300 × 230	990/1300 × 230
Hydraulic pumps	P1, P2	Variable displacement pump	Variable displacement pump
	Flow rate (ℓ/min)	17.3 × 2	17.3 × 2
	Hydraulic pressure MPa - (kgf/cm²)	21.6 (220)	21.6 (220)
	P3	Gear type	Gear type
	Flow rate (ℓ/min)	10.4	10.4
	Hydraulic pressure MPa - (kgf/cm²)	20.6 (210)	20.6 (210)
Dig depth	(mm)	2380	2580
Max. reach at ground level	(mm)	3860	4070
Max. digging force	Arm (kN - kgf)	8.3 (840)	7.8 (790)
	Bucket (kN - kgf)	15.9 (1620)	15.9 (1620)
Auxiliary circuit	Max. Flow rate (ℓ/min)	27.7	27.7
	Hydraulic pressure MPa - (kgf/cm²)	21.6 (220)	21.6 (220)
Fuel tank capacity	ℓ	21	21
Max. travelling speed	Low (km/h)	2.2	2.2
	High (km/h)	4.0	4.0



www.kubota.co.uk

2.0-3.0 TONNE

U20-3a

The U20-3a mini excavator is ready for action, offering precision control for restricted working and a host of advanced features that deliver superior performance and efficiency.

Engine

Highly trusted, efficient Kubota E-TVCS diesel engine with unique Three Vortex Combustion System that reduces exhaust emissions, noise and vibration.

Versatility

Kubota's zero tail swing for excellent stability, smooth control and operation in confined spaces without need for additional weights. The **U27-4** has a fixed track. The **U20-3a** tracks can adjust between 1300mm to 1500mm to easily navigate narrow spaces, or optimise stability when using heavy attachments.

Hydraulics

Two variable pumps enable simultaneous operation of the boom, arm, bucket and the swivel for continuous high-performance digging and dozing.



Comfort

The **U20-3a** cab is ergonomically designed for smooth operation. Flat floor design with conveniently placed levers (including a 2-speed travel switch on the dozer lever) ensures optimum comfort. Wrist rests and a high back seat also enable smoother control and reduce operator fatigue.

The **U27-4** (pictured above) offers the largest cab in its class, with wide, easy low-access, gas-assisted front window. The U27-4 also has a relaxing suspension seat, plus expansive visibility at the front and rear.

U27-4

With the largest cab in its class, the U27-4 brings luxury to even the toughest of jobs, featuring a spacious cab with an expansive field of vision and a wider and lower entrance for easy cab entry and exit.



Performance

The powerful and well-balanced arm and bucket offers powerful and fast workability with excellent stability.

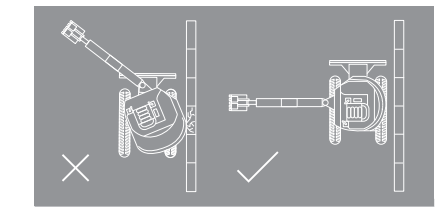
Safety

Standard Equipment: **U20-3a**: ROPS (Roll Over Protective Structure) / FOPS (Falling Objects Protective Structure Level 1).

U27-4: ROPS (Roll Over Protective Structure), OPG (Operator Protective Guard, Level 1) and top-frame tie down points for safer transportation.



#Kubota innovation



ZERO TAIL SWING: Safe manoeuvrability. Minimum effort.

Kubota's innovative zero tail swing offers safer working in confined conditions by keeping the rear within the excavators track width, whilst being able to turn a full 360-degrees. Zero tail swing ensures excellent balance, stability and fast operation, ideal for jobs in congested urban areas.

2.0-3.0 TONNE /U20-3a/ U27-4 Technical overview

		U20-3a	U27-4
Machine weight	Cab/canopy (kg)	2380/2180	2590/2490
Operating weight	Cab/canopy (kg)	2455/2255	2665/2565
Bucket capacity, std. SAE/CECE	m³	0.066/0.056	0.080/0.064
Engine	Model	D1105-E2-BH-12	D1105-E4-BH-2
	Type	Water-cooled, diesel, E-TVCS	Water-cooled, diesel, E-TVCS
	Output (PS/rpm)	19/2200	21.2/2400
	ISO9249 (kW/rpm)	14/2200	15.6/2400
	No of cylinders	3	3
Overall length	(mm)	3850	4190
Overall height	Cab (mm)	2360	2430
	Canopy (mm)	2380	2420
Dozer size	(width v height) mm	1300/1500 × 290	1500 × 300
Hydraulic pumps	P1, P2	Variable displacement pump	Variable displacement pump
	Flow rate	23 × 2	28.8 × 2
	Hydraulic pressure MPa - (kgf/cm²)	21.6 (220)	21.6 (220)
	P3	Gear type	Gear type
	Flow rate (ℓ/min)	12.8	19.2
	Hydraulic pressure MPa - (kgf/cm²)	20.6 (210)	17.2 (175)
Dig depth	mm	2540	2820
Max. reach at ground level	mm	4260	4630
Max. digging force	Arm (kN - kgf)	13.2 (1350)	12.3 (1260)
	Bucket (kN - kgf)	18.4 (1880)	21 (2140)
Auxiliary circuit	Max. Flow rate (ℓ/min)	35.8	48
	Hydraulic pressure MPa - (kgf/cm²)	21.6 (210)	17.2 (175)
Fuel tank capacity	ℓ	28	33
Max. travelling speed	Low (km/h)	2.2	2.5
	High (km/h)	4.2	4.5



www.kubota.co.uk

2.0-3.0 TONNE

KX027-4

A compact excavator that doesn't compromise on power or performance. It has the largest cab in its class, allowing for comfortable all-day operation and is cost effective to transport between sites, with two models to choose from.



KX030-4

When you need the ability to work in tight areas or challenging conditions – the KX030-4 delivers. Offering a powerful digging force combined with simultaneous operation of the boom, arm, bucket and swivel; the KX030-4 features the biggest cab in its class for efficient and comfortable all day long operation.



Engine

KX027-4: Powerful, reliable Kubota E-TVCS diesel engine with unique Three Vortex Combustion System that reduces exhaust emissions, noise and vibration.

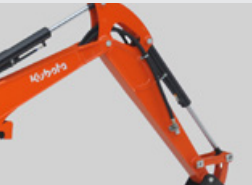
KX030-4: Kubota V1505-E2-BH diesel engine delivering economical, environmentally clean power - with up to 10 hours work on a full tank.



Versatility

The **KX027-4** compact track width provides all the stability needed to achieve any task, while being narrow enough to operate in places where space is restricted.

The **KX030-4** has a reduced overhang but offers increased rear visibility for easier operation in confined working areas.



Hydraulics

Two variable pumps and 1 gear pump enables simultaneous operation of the boom, arm, bucket and the swivel for continuous high performance digging and dozing.

Thumb-operated switches provide quick and easy proportional flow control for AUX1 and AUX2. (High-spec model only).



Comfort

Both the **KX027-4** and **KX030-4** have a wide cab, good legroom, adjustable suspension seat, excellent front and rear visibility, plus gas-assisted easy open front slide window. Kubota Intelligent Control System features a user-friendly intuitive digital panel.

The **KX030-4's** cab has an easy open front slide window, a relaxing adjustable suspension seat, and a new forward-mounted intuitive panel for better visibility.



Performance

The **KX027-4's** powerful and well-balanced arm and bucket allows the operator to dig faster and more efficiently, even in the toughest of conditions.

The **KX030-4's** impressive digging force allows the operator to dig fast, deep and more efficiently in the toughest of conditions.



Safety

ROPS (Roll Over Protective Structure), OPG (Operator Protective Guard, Level 1) and top-frame tie down points for safer transportation.

2.0-3.0 TONNE / KX027-4/KX030-4 Technical overview

		KX027-4	KX030-4
Machine weight	Cab/canopy (kg)	2590/2520	2790/2720
Operating weight	Cab/canopy (kg)	2665/2595	2865/2795
Bucket capacity, std. SAE/CECE	m³	-	-
Engine	Model	V1505-E4	V1505-E2-BH
	Type	Water-cooled, diesel engine E-TVCS	Water-cooled, diesel engine E-TVCS (Economical ecological type)
	Output (PS/rpm)	24/2250	24/2250
	ISO9249 (kW/rpm)	17.7/2250	17.7/2250
	No of cylinders	4	4
Overall length	1300mm arm (mm)	4370	4570
Overall height	Cab/canopy (mm)	2420/2420	2420/2420
Dozer size	(width v height) mm	1400 × 300	1500 × 300
Hydraulic pumps	P1, P2	Variable displacement pump	Variable displacement pump
	Flow rate (ℓ/min)	29.3 × 2	31.5 × 2
	Hydraulic pressure MPa (kgf/cm²)	22.5 (230)	23.5 (240)
	P3	Gear type	Gear pump
	Flow rate (ℓ/min)	18.0	18.0
Dig depth	Hydraulic pressure MPa (kgf/cm²)	17.2 (175)	19.6 (200)
	mm	2740	2870
Max. reach at ground level	mm	4600	4760
Max. digging force	Arm (kN - kgf)	12.9 (1320)	16.2 (1650)
	Bucket (kN - kgf)	22.1 (2250)	25.4 (2590)
Auxiliary circuit (AUX1)	Max. Flow rate (ℓ/min)	47.3	49.5
	Hydraulic pressure MPa - (kgf/cm²)	22.5 (230)	23.5 (240)
Auxiliary circuit (AUX2) (Aux2 on hi-spec version only)	Max. Flow rate (ℓ/min)	18.0	18.0
	Hydraulic pressure MPa - (kgf/cm²)	17.2 (175)	19.6 (200)
Fuel tank capacity	ℓ	48	48
Max. travelling speed	Low (km/h)	2.7	2.9
	High (km/h)	4.6	4.5



3.5 TONNE

U36-4

Kubota's U36-4 combines superior power and outstanding versatility to tackle demanding jobs in a variety of conditions. Using the same spacious cab as our larger 5-tonne excavator, the U36-4 also features zero tail swing.



Engine

Reliable and powerful Kubota direct injection diesel engines enables high energy output, minimal noise and vibration, minimised fuel emissions with low fuel consumption.



Versatility

The U36-4 zero-tail swing enables excellent stability and operation in confined spaces.. The KX037-4 dozer blade offers a generous approach angle for confident obstacle navigation.



Hydraulics

Kubota's 1-pump load sensing hydraulic system ensures smoother operation, regardless of load size. Featuring a proportional flow AUX switch - with the offering pre-programming up to five different oil flows for specific attachments using the digital control panel (KX037-4 only).



Comfort

Spacious cab with plenty of legroom, adjustable deluxe suspension seat, excellent visibility, plus the Kubota Intelligent control system featuring a user-friendly digital panel for optimum control. Air conditioning optional.

KX037-4

The new KX037-4 boasts a wealth of features to improve everyday efficiency, ease of use and compliance with industry regulations. It features Kubota's engine safe start system plus a hydraulic lockout on the left-hand console and optional safety valves for the boom, arm and dozer.



Performance

Matched boom arm and bucket guarantees superior and efficient digging force, thanks to large-capacity displacement pumps. Auto-shift system offers automatic travel shift from high to low depending on traction effort and terrain. An Auto Idling system (KX037-4) reduces noise, emissions and fuel costs



Safety

Standard Equipment: ROPS roll over protective structure / FOPS (Falling Objects Protective Structure Level 1). A swivel negative brake automatically locks the swivel function. KX037-4 features fuel tank level buzzer. Overload buzzer optional.



3.5 TONNE / U36-4 / KX037-4

Technical overview

		U36-4	KX037-4
Machine weight	Cab/canopy (kg)	3755/3575	3590/3430
	Operating weight	3830/3650	3665/3505
Bucket capacity, std. SAE/CECE	m³	0.11/0.10	0.107/0.093
Engine	Model	D1703-M-DI-E4	D1703-M-DI-E4
	Type	Vertical 4-cycle liquid cooled	4-cycle liquid cooled diesel
	Output (PS/rpm)	24.2/2200	24.2/2200
	ISO9249 (kW/rpm)	17.8/2200	17.8/2200
	No of cylinders	3	3
Overall length	mm	4910	4900
Overall height	Cab/canopy (mm)	2480	2470/2480
Dozer size	(width v height) mm	1700 × 340	1550 × 340mm
Hydraulic pumps	P1, P2	Variable displacement pump	Variable displacement pump
	Flow rate (ℓ/min)	81.4	81.4
	Hydraulic pressure MPa (kgf/cm²)	24.5 (250)	24.5 (250)
	P3	Gear pump	Gear pump
	Flow rate (ℓ/min)	20.9	20.9
Dig depth	mm	3410	3410mm
Max. reach at ground level	mm	5490	5245mm
Max. digging force	Arm (kN - kgf)	17.1 (1740)	17.1 (1745)
	Bucket (kN - kgf)	30.0 (3060)	30.0 (3060)
Auxiliary circuit	Max. Flow rate (ℓ/min)	61.6	61.6
	Hydraulic pressure MPa - (kgf/cm²)	20.6 (210)	20.6 (210)
Auxiliary circuit (AUX2) (AUX2 on hi-spec version only)	Max. Flow rate (ℓ/min)	20.9	20.9
	Hydraulic pressure MPa - (kgf/cm²)	19.6 (200)	19.6 (210)
Max. travelling speed	Low (km/h)	3.0	3.0
	High (km/h)	4.6	4.6



www.kubota.co.uk

4.0-5.0 TONNE

KX042-4

The most environmentally friendly excavator in its class; the KX042-4 incorporates a DPF (Diesel Particulate Filter) to ensure a clean exhaust, plus Kubota's ECO Plus Mode to reduce fuel consumption. The KX042-4 is also performance-friendly, with a powerful and reliable engine, and the versatility you need for any job on the work site.



Engine

KX042-4: Powerful and reliable Kubota diesel engine with Common Rail System and Diesel Particulate Filter (DPF) Muffler. These allow for greater efficiency, fuel economy, less engine noise and low emissions.

U48-4: Powerful Kubota 40.5 PS Direct Injection diesel engine for maximum digging and lifting with minimised noise and vibration.



Versatility

KX042-4: Dozer blade float function, making a clean ground surface after backfilling.

U48-4: A zero tail swing lets you travel through and turn the cab easily. Great in tight spaces and it does not need additional weights.

Hydraulics

Kubota's 1-pump load sensing hydraulic system ensures smoother operation, regardless of load size.

U48-4

The Kubota U48-4 - this advanced 4.8 tonne machine is designed with excellent stability to work efficiently, even where space is confined. With superior digging and lifting power, alongside smooth travel performance, this Kubota truly has it all.



Comfort

A wide and relaxing cab, providing plenty of legroom, adjustable deluxe suspension seat, standard air conditioning on L model machines, excellent front and rear visibility with easy open gas assist front slide window.

The LCD panel for Kubota's Intelligent Control System is ergonomically positioned, has an easy-to-read display, and effortless button operation.

Performance

A well-balanced arm and bucket guarantee superior and efficient digging force in the most difficult of conditions.

The auto-shift system for smooth automatic travel shift from high to low depending on traction effort and terrain.

Auto Idling system (AI) reduces noise, emissions and fuel costs.

ECO PLUS system for lower fuel consumption or increased productivity for tough digging applications. (KX042-4).



Safety

Standard Equipment:
ROPS (Roll Over Protective Structure), OPG (Operator Protective Guard) Level 1.

Engine Start Lockout System prevents starting when safety lever is lowered.

KX042-4 comes complete with the ability to fit optional top frame and rear counterweight tie down points for safer transportation.

4.0-5.0 TONNE / KX042-4/U48-4

Technical overview

Model		KX042-4	U48-4
Machine weight	Cab (kg)	4125	4700
Operating weight	Cab (kg)	4200	4775
Bucket capacity, std. SAE/CECE	m³	–	0.14/0.12
Engine	Model	D1803-CR-TE4	V2607-DI
	Type	Water-cooled, diesel	Water-cooled, diesel
	Output (PS/rpm)	39.4/2200	40.5/2200
	ISO9249 (kW/rpm)	29.0/2200	29.8/2200
	No of cylinders	3	4
Overall length	mm	5085	5330
Overall height	Cab (mm)	2485	2550
Dozer size	(width v height) mm	1700 × 350	1960 × 410
Hydraulic pumps	P1	Variable displacement pump	Variable displacement pump
	Flow rate (ℓ/min)	92.4	118.8
	Hydraulic pressure MPa - (kgf/cm²)	24.5 (250)	24.5 (250)
Dig depth	(mm)	3375	3380
Max. reach at ground level	(mm)	5380	5710
Max. digging force	Arm (kN - kgf)	17.9 (1820)	22.0 (2245)
	Bucket (kN - kgf)	30.4 (3100)	33.0 (3360)
Auxiliary circuit (SP1)	Max. Flow rate (ℓ/min)	65	70
	Max hydraulic MPa - (kgf/cm²)	20.6 (210)	20.6 (210)
Auxiliary circuit (SP2)	Max. Flow rate (ℓ/min)	37	37
	Max hydraulic MPa - (kgf/cm²)	20.6 (210)	20.6 (210)
Fuel tank capacity	ℓ	64	68
Max. travelling speed	Low (km/h)	2.8	2.8
	High (km/h)	4.9	4.9



5.4-6.0 TONNE

U55-4

This advanced 5.4 tonne machine is designed with excellent stability to work efficiently even where space is confined. The U55-4 offers upgraded digging and lifting power, alongside smooth operation for efficient and reliable everyday-performance.

The U55-4 also features a tight tail swing.



KX057-4

This powerful and advanced machine is designed to operate a variety of attachments. The enhanced versatility, upgraded digging power, and smoother travel performance make the Kubota KX057-4 exceptional.

(U55-4 and KX057-4 models are available in S & L spec, L spec including air conditioning and AUX1 and 2, KX057-4 L spec also includes an electric refuelling pump.)



5.4-6.0 TONNE /U55-4/KX057-4

Technical overview

		U55-4	KX057-4
Machine weight	Cab (kg)	5325	5470
Operating weight	Cab (kg)	5400	5545
Bucket capacity, std. SAE/CECE	m³	0.16/0.13	0.17/0.15
Engine	Model	V2607-DI	V2607-DI
	Type	Water-cooled, diesel	Water-cooled, diesel
	Output (PS/rpm)	33.8/2200	33.8/2200
	ISO9249 (kW/rpm)	46.0 (2200)	46.0 (2200)
	No of cylinders	4	4
Overall length	mm	5500	5520
Overall height	Cab (mm)	2550	2550
Dozer size	width v height (mm)	1960 × 410	1960 × 410
Hydraulic pumps	P1, P2	Variable displacement pump	Variable displacement pump
	Flow rate (ℓ/min)	56.1 × 2	56.1 × 2
	Hydraulic pressure MPa - (kgf/cm²)	27.4 (280)	27.4 (280)
	P3	Gear type	Gear pump
	Flow rate (ℓ/min)	37.0	37.0
	Hydraulic pressure MPa - (kgf/cm²)	19.1 (195)	19.1 (195)
	Dig depth	mm	3630
	Max. reach at ground level	mm	5960
Max. digging force	Arm (kN - kgf)	27.2 (2770)	24.5 (2500)
	Bucket (kN - kgf)	42.3 (4315)	42.3 (4315)
Auxiliary circuit (SP1)	Max. Flow rate (ℓ/min)	75	75
	Max hydraulic MPa - (kgf/cm²)	20.6 (210)	20.6 (210)
Auxiliary circuit (SP2)	Max. Flow rate (ℓ/min)	37	37
	Max hydraulic MPa - (kgf/cm²)	19.1 (195)	19.1 (195)
Fuel tank capacity	ℓ	68	75
Max. travelling speed	Low (km/h)	2.8	2.8
	High (km/h)	4.9	4.9



Engine

U55-4: uses a Kubota direct injection 46 PS engine for maximised digging and lifting, with minimal noise and vibration.

KX057-4: uses a Kubota direct injection 46 PS engine for maximised digging and lifting, with minimal noise and vibration.

Electric refuelling pump with an auto-stop function. (KX057-4 L model only.)



Versatility

The tight tail swing on the U55-4 is highly versatile when working in confined spaces, offering exceptional stability and performance.

Versatility is greatly enhanced by the auxiliary circuits: SP1 standard on the S model, SP1 & SP2 standard on the L model. Both circuits' maximum flow is adjustable via the digital panel.



Hydraulics

Kubota's improved 3-pump load sensing hydraulic system ensures smoother operation, regardless of load size. It allows hydraulic oil to flow according to the specific range of the operator's lever motion. The result is greater fuel economy and smoother travelling.



Cab

Luxurious cab with wide entrance, deluxe seat, air conditioning (L model only) and easy-to-use features.

Kubota's Intelligent Control System features an ergonomically positioned, easy-to-read display that keeps you aware of the excavator's functioning status.



Performance

A well-balanced arm and bucket guarantee superior and efficient digging force in the most difficult of conditions.

The auto-shift system allows for smooth automatic travel shift from high to low, depending on traction effort and terrain.



Safety

Standard Equipment: ROPS (Roll Over Protective Structure) and OPG (Operator Protective Guard).

Both machines are fitted as standard with boom & arm anti-drop valves with boom lowering control.





www.kubota.co.uk

8.0 TONNE

KX080-4a

The KX080-4a delivers all the power you need, whilst also being one of the most environmentally friendly excavators in its class. Advanced features include: a Direct Injection diesel engine with common rail system (CRS), a Diesel Particulate Filter (DPF) with a muffler, and a host of other functions and equipment, including ECO E PLUS for superior fuel economy and productivity.



Engine

A powerful and reliable Kubota diesel engine, fuel economy, less engine noise and low emissions. Its combination with the Exhaust Gas Recirculation (EGR) and DPF Muffler reduces emissions to make the KX080-4a Stage III B compliant.

Electric refuelling pump with an auto-stop function that reduces risk of spillage.

Features Kubota's original automatic regeneration system in the DPF muffler for longer operation.



Versatility

The KX080-4a's narrow 2200mm width is ideal for working in close conditions, and is easier to transport between sites. A shorter rear-overhang ensures improved workability in restricted spaces, better versatility, and more stability.

Hydraulics

With a dozer blade float function to help level the surface, Kubota's 2-pump load sensing hydraulic system ensures smoother operation, regardless of load size, delivering greater operating performance and reduced fuel consumption.



Cab

The luxurious cab features a wide entrance, generous legroom and a deluxe suspension seat, air conditioning, excellent front and rear visibility with easy open gas assist front slide window, plus advanced visibility mirrors and ergonomically positioned controls.

The Kubota Intelligent Control System features a wide, easy-to-read display with effortless button operation.

Performance

The KX080-4a also has an impressive dumping range, and is versatile when working in tight spaces. A two-piece boom version is also available, delivering even greater on-site versatility.

Auto Idling system (AI) reduces noise, emissions and fuel costs.

ECO E PLUS system lowers fuel consumption and costs, offering increased productivity for tough digging applications in power mode, and lower fuel consumption in Eco Mode.

Safety

Standard Equipment: ROPS (Roll Over Protective Structure)/OPG (Operator Protective Guard, Level 1). OPG front guard, Top Guard Level II is optional.

Integrated tie down points on the top frame for safer transportation.

Boom & arm anti-drop valves with boom lowering control.



#Kubota innovation



ECO E PLUS:

Increase productivity.
Reduce costs.

Kubota's original ECO E PLUS prioritises fuel economy, and supports the environment.

ECO E PLUS is available in standard mode and delivers up to 14% fuel savings and up to 8% productivity improvement over the previous model.

For even greater fuel savings, activate ECO E Plus with a flick of a switch for up to 16% fuel savings over standard mode.


8.0 TONNE / KX080-4a

Technical overview

	KX080-4a	KX080-4a (2 Piece Boom)
Machine weight*1	kg	8240
Operating weight*2	kg	8315
Bucket capacity, std. SAE/CECE	m³	0.25/0.21
Bucket width	With side teeth (mm)	800
	Without side teeth (mm)	700
Engine	Model	V3307-CR-TE4
	Type	Water-cooled, diesel engine E-CDIS (with CRS and DPF)
	Output ISO9249 NET (PS/rpm)	63.2/2000
	kW/rpm	46.5/2000
	Number of cylinders	4
	Bore x Stroke (mm)	94 x 120
Swivelling speed	rpm	10.2
	mm	450
Rubber shoe width	mm	2300
Tumbler distance	mm	2200 x 500
Dozer size (width x height)	mm	Variable displacement pump
Hydraulic pumps	P1,P2	Flow rate l/min
		84.6 x 2
Max. digging force	Arm kN (kgf)	Hydraulic pressure MPa (kgf/cm²)
	Bucket kN (kgf)	27.4 (280)
Boom swing angle (left/right)	deg	38.1 (3880)
		65.2 (6650)
Minimum front swivel radius with boom swing (left/right)		70/60
Digging depth	mm	2050/2380
Max. reach at ground level	mm	1990/2310
Auxiliary circuit (AUX1)	Max. Flow rate (l/min)	4600
	Max. Hydraulic pressure MPa (kgf/cm²)	4590
Auxiliary circuit (AUX2)	Max. Flow rate (l/min)	7170
	Max. Hydraulic pressure MPa (kgf/cm²)	7670
Hydraulic reservoir	ℓ	100
Fuel tank capacity	ℓ	20.6 (210)
Max. travelling speed	Low (km/h)	66.6
	High (km/h)	20.6 (210)
Ground contact pressure	kPa (kgf/cm²)	75
Ground clearance	mm	115
		2.7
		4.8
		36.1 (0.369)
		38.4 (0.392)
		355

*1 - With 176.6kg standard bucket and fully served.

*2 - With 75kg operator, 176.6kg standard bucket and fully served.

A red Kubota excavator is shown in the foreground, dumping a load of dark soil from its bucket. The excavator is positioned on a pile of earth. In the background, several tall, thin metal structures, possibly cranes or drilling rigs, are visible against a cloudy sky. The overall scene is a construction or mining site.

**Performance
you can
count on.**

Performance this good doesn't just happen. It's designed from the ground up. At Kubota, everything we do is based on in-depth research and development which, in turn, is based on what we see every day, in practice, on the land.

Our excavators are backed by an outstanding dealer and after sales service, becoming more than just a Kubota, it becomes a way of life.

**We put more in, so
you get more out**

**Compact
performance.
Maximum
workload.**



www.kubota.co.uk

TRACK DUMPERS

The Kubota KC range of compact, high performance track dumpers are the perfect choice for effective and economical daily on-site transport work.

Combining compact, durable design with Kubota technology ensures maximum stability on slopes. It also allows for minimum noise and vibration development when at work.



Unloading Operation

Unloading operation is fast and easy. The profile of the skip of every model has been designed to ensure a quick discharge of the material.



Compact Versatility

The compact design of the KC track dumpers enables efficient movement of materials through narrow spaces (KC70-4, KC110 range).

KC RANGE

KC70-4

Compact, powerful and designed for optimum comfort and fuel efficiency, the Kubota KC70-4 track dumpers save time and trouble transporting up to 700 kg of materials, with five versions available:

- KC70H-4 – compact design for access through narrow spaces
- KC70HV-4 – variable undercarriage version that offers narrow access and greater stability
- KC70VHD-4 – vertical high dump version
- KC70SL-4 – compact design with a self loading shovel
- KC70VSL-4 – Variable undercarriage version with a self loading shovel



Engine

Powerful and efficient Kubota diesel engine (9.4 PS at 3500 rpm) that delivers high torque, even at low speeds, with low fuel consumption. Its quiet operation and low emissions means a lower impact on the environment.



Versatility

Variable undercarriage. The **KC70HV-4 /KC70VHD-4** & **KC70VSL-4** track width can extend from 758mm to 1058mm. At minimum width, it can easily go through a standard door. Extended to its maximum width, it enhances stability in all conditions.

High dumping function. The **KC70VHD-4** features a vertical, telescopic high dump function, 1.43m high (pin height) and a dumping reach of 447mm to allow for easy emptying.

Self-loading models. The **KC70SL-4** and **KC70VSL-4** feature a self loading shovel. This device is very useful when you need to remove loose material or clear demolition rubble.

Hydraulics

The loading shovel of the **KC70SL-4** and **KC70VSL-4** is activated by two hydraulic cylinders located under the skip for optimum lifting capacity and features a hydraulic oil cooler enabling non-stop working for the toughest applications.



Performance

Unloading operation is fast and easy with a skip designed to ensure quick discharge of materials with a dumping angle of up to 88°.

The **KC70-4** range features an advanced hydraulic transmission for smooth control and shift between low and high speed (2.2 – 3.3 km/h) to suit the terrain for efficient and productive working.



Comfort

The operational levers are easy to reach and operate. A grab handle bar secures the operator during operation.

Safety

Sensors emit an audible warning alert when the skip is operating on a slope angle of more than 7°. (Only available on the high dump.)

KC RANGE /KC70-4 Technical overview

		KC70H-4	KC70HV-4	KC70VHD-4	KC70SL-4	KC70VSL-4
Engine	Make	Kubota	Kubota	Kubota	Kubota	Kubota
	Model	OC95	OC95	OC95	OC95	OC95
	Output kW (PS) / rpm	7,1 (9,4) / 3500	7,1 (9,4) / 3500	7,1 (9,4) / 3500	7,1 (9,4) / 3500	7,1 (9,4) / 3500
	Displacement (cc)	416	416	416	416	416
	Cooling system	Air and oil cooled	Air and oil cooled	Air and oil cooled	Air and oil cooled	Air and oil cooled
Service weight	kg	580	660	740	655	735
Max. loading capacity	kg	700	700	550	700	700
Skip tipping system		Hydraulic	Hydraulic	Hydraulic	Hydraulic	Hydraulic
Dumping direction		Front	Front	Front	Front	Front
Dumping height	mm	450	450	1355	431	431
Transmission	Type	Hydraulic	Hydraulic	Hydraulic	Hydraulic	Hydraulic
	Hydraulic pump	2 gear type pumps	2 gear type pumps	2 gear type pumps	2 gear type pumps	2 gear type pumps
	Flow (for each pump) / min	2 x 14.2	2 x 14.2	2 x 14.2	2 x 14.2	2 x 14.2
	Hydraulic motors	Orbital motor	Orbital motor	Orbital motor	Orbital motor	Orbital motor
	Max. pressure bar	165	165	165	165	165
	Main valve	4 sections	5 sections	6 sections	5 sections	6 sections
Dimensions	Overall length (mm)	1860 / 2074	1860 / 2074	2010 / 2224	1892 / 2106	1892 / 2106
	Overall height (mm)	1300	1300	1625	1563	1563
	Overall width (mm)	758	758 ~ 1058	758 ~ 1058	758	758 ~ 1058
Internal skip dimensions	Length (mm)	1030	1030	943	1071	1071
	Width (mm)	686	686	677	628	628
	Height (mm)	615	615	559	641	641
	Dumping angle (deg)	88	88	85	88	88
	Heaped volume (m³)	0,34	0,34	0,29	0,34	0,34
	Level volume (m³)	0,28	0,28	0,24	0,28	0,28
	Ground clearance (mm)	202	127	202	127	127
	Tumbler distance (mm)	894	894	894	894	894
	Rubber shoe width (mm)	180	180	180	180	180
	Track roller	3	3	3	3	3
Travelling speed (Forward / Reverse)	1st speed (km/h)	0 ~ 2,2	0 ~ 2,2	0 ~ 2,2	0 ~ 2,2	0 ~ 2,2
	2nd speed (km/h)	0 ~ 3,3	0 ~ 3,3	0 ~ 3,3	0 ~ 3,3	0 ~ 3,3
	Max. gradeability	Front 15° / Side 20°	Front 15° / Side 20°	Skip down 15° / Skip up 7°	15°	15°
Fuel tank capacity	ℓ	5.5	5.5	5.5	5.5	5.5
Hydraulic oil tank capacity	ℓ	27	27	27	27	27
Ground pressure	Unloaded (gr/cm²)	180	205	230	203	228
	Loaded (gr/cm²)	398	423	401	421	446

www.kubota.co.uk

KC RANGE

KC70-4P

Compact and powerful, fitted with an efficient petrol engine, the Kubota KC70-4P range is an ideal addition for any work site with the ability to transport up to 700kg of material.

- KC70H-4P – Regular skip, fixed undercarriage
- KC70HV-4P – Regular skip, extendible undercarriage
- KC70HD-4P – High dump skip, fixed undercarriage
- KC70VHD-4P – High dump skip, extendible undercarriage
- KC70SL-4P – compact design with a self loading shovel



Engine

Powerful and efficient petrol engine (8.4PS at 3600rpm) with low fuel consumption, its quiet operation and low emissions means lower impact on the environment and acceptance in inner city areas.



Versatility

Variable undercarriage. The **KC70HV-4P /KC70VHD-4P & KC70VSL-4P** track width can extend from 758mm to 1058mm. At minimum width, it can easily go through a standard door. Extended to its maximum width, it enhances stability in all conditions.

High dumping function. The **KC70VHD-4P & KC70HD-4P** feature a vertical, telescopic high dump function, 1.43m high (pin height) and a dumping reach of 447mm to allow for easy emptying.

Self-loading models. The **KC70SL-4P & KC70VSL-4P** feature a self loading shovel. This device is very useful when you need to remove loose material or clear demolition rubble.

Hydraulics

On the **KX70SL-4P**, the loading shovel is activated by two hydraulic cylinders located under the skip for optimum lifting capacity.



Performance

Unloading operation is fast and easy with a skip designed to ensure quick discharge of materials with a dumping angle of up to 88°.

The **KC70-4P** range features an advanced hydraulic transmission for smooth control and shift between low and high speed (2.2 – 3.3 km/hr) to suit the terrain for efficient and productive working.



Comfort

The operational levers are easy to reach and operate. A grab handle bar secures the operator during operation.

Safety

Sensors emit an audible warning alert when the skip is operating on a slope angle of more than 7°. (Only available on the high dump.)

KC RANGE /KC70-4P

Technical overview

Model		KC70H-4P	KC70HV-4P	KC70SL-4P	KC70HD-4P	KC70VHD-4P
Engine	Make	Honda	Honda	Honda	Honda	Honda
	Model	GX270	GX270	GX270	GX270	GX270
	Output kW (PS) / rpm	6.3 (8.4) / 3600	6.3 (8.4) / 3600	6.3 (8.4) / 3600	6.3 (8.4) / 3600	6.3 (8.4) / 3600
	Displacement (cc)	270	270	270	270	270
	Cooling system	Air cooled	Air cooled	Air cooled	Air cooled	Air cooled
Service weight	kg	540	620	600	620	700
Max. loading capacity	kg	700	700	700	550	550
Skip tipping system		Hydraulic	Hydraulic	Hydraulic	Hydraulic	Hydraulic
Dumping direction		Front	Front	Front	Front	Front
Dumping height	mm	460	460	431	1355	1355
Transmission	Type	Hydraulic	Hydraulic	Hydraulic	Hydraulic	Hydraulic
	Hydraulic pump	2 gear type pumps	2 gear type pumps	2 gear type pumps	2 gear type pumps	2 gear type pumps
	Flow (for each pump) / min	2 x 14.2	2 x 14.2	2 x 14.2	2 x 14.2	2 x 14.2
	Hydraulic motors	Orbital motor	Orbital motor	Orbital motor	Orbital motor	Orbital motor
	Max. pressure bar	165	165	165	165	165
	Main valve	4 sections	5 sections	5 sections	5 sections	6 sections
Dimensions	Overall length mm	2074 / 1860	2074 / 1860	2106 / 1892	2224 / 2010	2224 / 2010
	Overall height (mm)	1300	1300	1318	1625	1625
	Overall width (mm)	758	758 ~ 1058	758	758	758 ~ 1058
	Internal skip dimensions	Length (mm)	1030	1030	1070	943
Width (mm)		686	686	628	677	677
Height (mm)		615	615	641	559	559
Dumping angle (deg)		88	88	88	85	85
Heaped volume (m³)		0.34	0.34	0.34	0.29	0.29
Level volume (m³)		0.28	0.28	0.28	0.24	0.24
Undercarriage	Ground clearance (mm)	202	127	202	202	127
	Tumbler distance (mm)	894	894	894	894	894
	Rubber shoe width (mm)	180	180	180	180	180
	Track roller	3	3	3	3	3
Travelling speed (Forward / Reverse)	1st speed (km/h)	0 ~ 2.2	0 ~ 2.2	0 ~ 2.2	0 ~ 2.2	0 ~ 2.2
	2nd speed (km/h)	0 ~ 3.3	0 ~ 3.3	0 ~ 3.3	0 ~ 3.3	0 ~ 3.3
	Max. grade ability	15°				Skip down 15° / Skip up 7°
Fuel tank capacity	ℓ	5.3	5.3	5.3	5.3	5.3
Hydraulic oil tank capacity	ℓ	27	27	27	27	27



www.kubota.co.uk

KC RANGE

KC110HR-4

Designed for productive operation, the KC110HR-4 offers maximum traction, minimal ground pressure, and a 1000kg loading capacity with 0.52m³ heaped volume – making this mini track dumper ideal for any work site.



Engine

The tough and reliable, Kubota diesel engine (15.7 PS at 2550 rpm) delivers high torque, even at low speeds. Low fuel consumption, quiet operation, and low emissions which result in a lower impact on the environment.



Versatility

With an overall width of only 990 mm, the KC110HR-4 compact design efficiently transports material through gates and doorways, between houses, buildings and many other narrow spaces.

A folding footplate can reduce the overall length by 250mm for easy storage.



Hydraulics

The skip rotation is powered by a hydraulic swivel motor, mounted on a slew ring, which ensures smooth, precise and fast rotation of the skip through 180°.

Comfort

The operational levers are easy to reach and operate. A grab handle bar secures the operator during operation.



Performance

Unloading operation is fast and easy with a skip profile designed to ensure quick discharge of materials with a dumping angle of 90°. The rotary function allows you to tip side ways (180°) when filling a trench, for example.

A two speed transmission (up to 5 km/hr), combined with auto shift down function, offers maximum traction force in tough conditions or when turning on the spot.

KC RANGE/KC110HR-4

Technical overview

		KC110HR-4
Engine	Model	D722
	Output (kW (PS / rpm)	11.8 (15.7) / 2550
	Displacement	719
	Cooling system	Water-cooled
Service weight	(kg)	960
Max. loading capacity	(kg)	1000
Skip tipping system		Hydraulic
Dumping direction		Rotary / 180°
Dumping height	(mm)	495
Transmission	Type	Hydraulic
	Hydraulic pump	2 variable pumps
	Flow (for each pump) l /min	2 × 29.2
	Hydraulic motors	Transmittal piston motor
	Max. pressure (bar)	175
	Main valve	5 sections
Dimensions	Overall length (mm)	2325 / 2075 (foot step up)
	Overall height (mm)	1470
	Overall width (mm)	990
Internal skip dimensions	Length (mm)	1300
	Width (mm)	890
	Height (mm)	605
	Dumping angle (deg)	90°
	Heaped volume (m³)	0.52
	Level volume (m³)	0.44
Undercarriage	Ground clearance (mm)	184.5
	Tumbler distance (mm)	1075
	Rubber shoe width (mm)	230
	Track roller	3
Travelling speed (Forward/Reverse)	1st speed (km/h)	0 ~ 2,6
	2nd speed (km/h)	0 ~ 5
	Max. gradeability	20°
Fuel tank capacity	ℓ	20
Hydraulic oil tank capacity	ℓ	25
Ground pressure	Loaded gr/cm²	200



www.kubota.co.uk

KC RANGE

KC250-4

Powerful and versatile, the KC250-4 can transport a large quantity of material easily and quickly with its fast travelling speed and a loading capacity of 2500 kg: ideal for working in varying ground conditions.

2 models available:

- KC250HR-4 – 180° rotary dumping function
- KCX250H-4 – 3-way dump



Engine

Tough and reliable, the water-cooled Kubota diesel engine delivers high torque, enhanced power (45.5 PS at 2300 rpm) and optimum fuel efficiency to minimise operating costs. It also features cleaner emissions and quieter operation, which means it has a lower impact on the environment.



Versatility

Unloading operation on both models is fast and easy. The profile of the skip has been designed to ensure a quick discharge of the material. With a dumping angle of 55°(H version) and 84° (HR version), all materials discharge very easily. The rotary function (180°) for the HR version and the 3-way dump (H version) allows them to empty sideways in all conditions, when filling a trench for example.



Hydraulics

A compact and extremely powerful hydraulic cylinder.

Comfort

Operators area features a deluxe, reversible seat that allows the operator to turn through 180 degrees and face the opposite direction of travel. Control levers are attached to the seat for flexible, safer operation. The control panel is conveniently located at the side of the operator.



Performance

Advanced track mechanism: triple flange rollers offer great stability on slopes and rough terrain and the short pitch track gives a smooth drive for comfort at high speed. A variable-speed, 2-pumps, 2-motors, clutchless advanced Hydrostatic Transmission System (HST) offers smooth control and effortless shifting between low speed to high speed (6–11 km/h). The vertical tipping angle of 84° (HR version) allows for easy discharge of materials even when operating on an incline.



Safety

Standard equipment: ROPS (Roll Over Protective Structure) / FOPS (Falling Objects Protective Structure, Level 1). Includes seat belt and 4 tie down points for safe transportation.

KC RANGE / KC250-4

Technical overview

		KC250H-4	KC250HR-4
Engine	Model	V2203-M	V2203-M
	Output (kW (PS) / rpm)	33.4 (45.5) / 2300	33.4 (45.5) / 2300
	Displacement	2197	2197
	Cooling system	Water-cooled	Water-cooled
Service weight	(kg)	2700	2700
Max. loading capacity	(kg)	2500	2500
Skip tipping system		Hydraulic	Hydraulic
Dumping direction		Three-way dump	Rotary / 180°
Dumping height	(mm)	580	920
Transmission	Type	Hydrostatic	Hydrostatic
	Hydraulic pump	2 variable pumps	2 variable pumps
	Flow (for each pump) l /min	2 × 54	2 × 54
	Hydraulic motors	Radial pistons motors	Radial pistons motors
	Max. pressure (bar)	350	350
	Main valve	2 sections	2 sections
Dimensions	Overall length (mm)	3275	3595
	Overall height (mm)	2400	2400
	Overall width (mm)	1660	1660
	Length (mm)	1637	2105
	Width (mm)	1440	1300
Internal skip dimensions	Height (mm)	400	494 / 670
	Dumping angle (deg)	55°	84°
	Heaped volume (m³)	1.36	1.49
	Level volume (m³)	0.977	1.09
	Ground clearance (mm)	344	344
Undercarriage	Tumbler distance (mm)	1950	1950
	Rubber shoe width (mm)	320	320
	Track roller	6	6
	1st speed (km/h)	0 ~ 6	0 ~ 6
Travelling speed (Forward / Reverse)	2nd speed (km/h)	0 ~ 11	0 ~ 11
	Max. gradeability	Front 20° / Side 25°	Front 20° / Side 25°
Fuel tank capacity	ℓ	40	40
Hydraulic oil tank capacity	ℓ	51	51
Ground pressure	Loaded gr/cm²	593	593

A Kubota RT270D backhoe loader is shown in a construction setting, digging a trench. The machine is orange and black, with the Kubota logo and model number clearly visible. The background shows a dirt area and some trees.

**Job done,
every time.**

When a job needs doing,
make sure you're in a Kubota.

Every machine is designed to
deliver maximum performance,
efficiency and reliability.

That's why Kubota's reliability is
more than just a proud boast: it's
legendary, backed by outstanding
after sales and dealer support
to keep you working.

We put more in, so
you get more out



WHEEL LOADERS

The Kubota RT and R range of articulated wheel loaders are designed to meet the requirements of varying types of loading work, with an operating weight ranging from 1100kg to 4800kg (R085).

With a substantial tipping load, these articulated wheel loaders are ready to take on any challenge – from construction site to farm work. They combine optimum performance, outstanding user comfort, and security features for efficient operation and control.



Customised flexibility

Kubota's wheel loaders are available with a range of attachments and tyre choices.

#Kubota innovation

ANTI-THEFT SYSTEM:

On site protection as standard.

Our machines feature the unique 'ANTI-THEFT PLUS' security system, integrated when they are built, to achieve Thatcham endorsement. Only "programmed keys" can start the engine. Even if keys are identically shaped, they can't start the engine unless they are programmed. In fact, if someone attempts to start the engine with a non-programmed key, it will activate the system's alarm. The alarm will continue to sound until the programmed key is inserted into the ignition and starts the engine.

NB: Available on all mini excavators (K008 and U10-3 excluded) and R0 Series.





RT RANGE

RT100

Compact and versatile articulated wheel loader for varying types of applications - with a machine weight of 1100 kg, a standard bucket capacity of 0.23m³, and a tipping load of 450 kg (straight position).



RT140

A versatile articulated wheel loader for construction and farming jobs - with a machine weight of 1480 kg, a standard bucket capacity of 0.32m³, and a tipping load of 580 kg (straight position).



Engine

Powered by durable and reliable Kubota water-cooled 3 cylinder diesel engines (**RT100**: 20PS-2200 rpm / **RT140**: 26PS-2050 rpm). This delivers high power and torque with low fuel consumption, quiet operation, and low emissions.



Versatility

The pivoting articulation allows the loader to drive through tight spaces whilst minimising damage to the ground surface.



Hydraulics

High performance hydraulic pump for efficient transmission of power, with a lever locking all front-attachment hydraulic functions.

RT140 is equipped with hydraulic quick coupler for easy and fast change of attachments.



Comfort

Operator area features an adjustable comfortable seat with armrest, a dashboard with easy-to-read displays, ergonomic multi-function operating lever, and a tiltable steering column.

Deluxe version includes canopy with working light (4 × working lights RT140).



Performance

Hydrostatic transmission – 4-wheel drive.

Heavy duty chassis with the hydraulic tank enclosed within the frame, providing an additional counterweight.

Double-acting auxiliary circuit (RT140 – additional 2nd electronically activated auxiliary circuit) on deluxe versions.



Safety

Standard equipment: ROPS (Roll Over Protective Structure) ISO3471 / FOPS (Falling Objects Protective Structure ISO3449) OPC (Operator presence seat switch) / Articulation locking bar.

RT RANGE/RT100/RT140

Technical overview

		RT100	RT140
Machine weight	Canopy (kg)	1100	1480
Operating weight	Canopy (kg)	1175	1555
Earth bucket capacity	(m³)	0.23	0.32
Engine	Model	D722	D1105
	Power (PS/rpm)	20/2200	26/2050
	Power kW/rpm	15/2200	19/2050
	No of cylinders	3	3
	Displacement (cc)	719	1123
	Cooling type	Water	Water
Transmission	Type	Hydrostatic	Hydrostatic
Performance with pallet fork	Tipping load with pallet fork in straight position (ISO14397)	A (kg)	750
		B (kg)	450
		C (kg)	325
	Tipping load in full turn position (ISO14397) kg	375	340
	Lifting capacity (kN)	6.1	10.0
	Breakout force (kN)	11.5	15.0
Tyres	Type	AS	AS
	Dimensions	23x8.5-12	7.00 x12 AS
Travel speed	(km/h)	0 ~ 12	0 ~ 12
Articulation angle	deg.	± 5.3	± 5.0
Auxiliary circuit	Oil flow (l/min)	28	42
	Oil pressure (bar)	150	150
Capacity	Fuel tank (ℓ)	45	25
	Engine oil (ℓ)	2.5	4.2
	Hydraulic tank (ℓ)	52	46
	Cooling system (ℓ)	4	4



www.kubota.co.uk

RT RANGE

RT150

A versatile articulated wheel loader for construction jobs that require power and manoeuvrability – with a machine weight of 1705 kg (cab) / 1500 kg (canopy), bucket capacity of 0.37m³ and a tipping load of 580 kg (straight position).



RT210

A versatile and powerful articulated wheel loader. With a machine weight of 2213 kg (cab) / 2100 kg (canopy), a bucket capacity of 0.38m³ and a tipping load of 950 kg (straight position), the RT210 is ideal for heavy-duty applications.



Engine

Powered by durable and reliable Kubota water-cooled 3 cylinder diesel engines (33PS/2060rpm). These deliver high power and torque, with low fuel consumption, quiet operation, and low emissions.



Versatility

The pivoting articulation allows the loader to drive through tight spaces whilst minimising damage to the ground surface.



Hydraulics

High performance hydraulic pump for efficient transmission of power, with lever locking of all front attachment hydraulic functions.

Hydraulic quick coupler for easy and fast change of attachments.



Comfort

Comfortable, operator area with adjustable comfort seat, easy-to-read dashboard, shuttle switch on multi-function operating lever, and tiltable steering column.

Deluxe versions includes cab with air heater, 4 working lights, radio and speakers.



Performance

Hydrostatic transmission – 4 wheel drive, and on the RT210 a limited slip differential to tackle even the roughest terrain.

Heavy duty chassis with the hydraulic tank enclosed within the frame providing an additional counterweight.



Safety

Standard Equipment: ROPS (Roll Over Protective Structure) ISO3471 / FOPS (Falling Objects Protective Structure) ISO344.

OPC operator presence switch and articulation locking bar.

RT RANGE/RT150/RT210

Technical overview

		RT150	RT210
Machine weight	Cab/canopy (kg)	1705* / 1500	2213 / 2100
Operating weight	Cab/canopy (kg)	1780 / 1575	2288 / 2175
Earth bucket capacity	(m³)	0.37	0.38
Engine	Model	D1105-T	D1105-T
	Power (PS/rpm)	33/2050	33/2050
	Power kW/rpm	23.5/2050	23.5/2050
	No of cylinders	3	3
	Displacement (cc)	1123	1123
	Cooling type	Water	Water
Transmission	Type	Hydrostatic	Hydrostatic
Performance with pallet fork	Tipping load with pallet fork in straight position (ISO14397)	A (kg)	800
		B (kg)	580
		C (kg)	435
	Tipping load in full turn position (ISO14397) kg	340	500
	Lifting capacity (kN)	10.0	15.0
	Breakout force (kN)	15.0	16.5
Tyres	Type	AS	AS
	Dimensions	7.00 × 12	10.00/75 × 15.3
Travel speed	(km/h)	0 ~ 12	0 ~ 18
Articulation angle	deg.	± 5.0	± 6.3
Auxiliary circuit	Oil flow (ℓ/min)	42	42
	Oil pressure (bar)	170	170
Capacity	Fuel tank (ℓ)	25	37
	Engine oil (ℓ)	4.2	4.2
	Hydraulic tank (ℓ)	46	56
	Cooling system (ℓ)	4	4

*Cab on deluxe version only



www.kubota.co.uk

RT RANGE

RT270

The RT270 combines a high-lifting height (2964 mm at bucket pins). It is well suited for high-loading in tight spaces - with a machine weight of 2820 kg (cab) / 2670 kg (canopy), bucket capacity of 0.42m³, and tipping load of 1200 kg (straight position).



Engine

Powered by a durable and reliable Kubota water-cooled 4 cylinder diesel engine (44PS/2000rpm), which delivers high power and torque with low fuel consumption, quiet operation and low emissions.

Versatility

The pivoting articulation allows the loader to drive through tight spaces whilst minimising damage to the ground surface.



Hydraulics

High performance hydraulic pump for efficient transmission of the power, with lever locking all front attachment hydraulic functions.

Hydraulic quick coupler for easy and fast change of attachments.

RT280

The RT280 offers a high lifting capacity for a machine of this size. It is the ideal machine for applications that require the transport of heavy loads - with a machine weight of 2770 kg (cab) / 2620 kg (canopy), bucket capacity of 0.42m³, and a tipping load of 1500 kg (straight position).



Comfort

Comfortable, ergonomically designed operator area with adjustable full suspension seat, with armrests, and seat belt. Easy-to-read dashboard, shuttle switch on, multi-function operating lever, and tiltable steering column.

Deluxe versions include cab with heater, radio, and speakers.

Road lights to meet road legislation requirements are available as an option.



Performance

Hydrostatic transmission – 4 wheel drive with 100% differential lock controlled by a switch on the multifunction lever, to tackle even the roughest terrain.

Heavy duty axles (max. capacity of 12 tons) for fast travelling speed (up to 25 km/hr) and a class-leading tipping load.

The counterweight is integrated into the rear part of the frame.



Safety

Standard equipment: ROPS (Roll Over Protective Structure) ISO3471 / FOPS (Falling Objects Protective Structure) ISO3449.

OPC operator presence switch and articulation locking bar.

RT RANGE/RT270/RT280

Technical overview

			RT270	RT280
Machine weight	Cab/canopy (kg)		2820 / 2670	2770 / 2620
	Cab/canopy (kg)		2895 / 2745	2845 / 2695
Earth bucket capacity	(m³)		0.42	0.42
Engine	Model		V1505-T	V1505-T
	Power (PS/rpm)		44/2000	44/2000
	Power kW/rpm		33/2000	33/2000
	No of cylinders		4	4
	Displacement (cc)		1498	1498
	Cooling type		Water	Water
Transmission	Type		Hydrostatic	Hydrostatic
Performance with pallet fork	Tipping load with pallet fork in straight position (ISO14397)	A (kg)	1700	2100
		B (kg)	1200	1500
		C (kg)	900	1150
	Tipping load in full turn position (ISO14397)kg		970	1167
	Lifting capacity (kN)		15.5	21.7
	Breakout force (kN)		27.0	23.5
Tyres	Type		AS	AS
	Dimensions		11.5/80-15.3	11.5/80-15.3
Travel speed	(km/h)		0-10 / 0-25	0-10 / 0-25
Articulation angle	deg.		± 8.8	± 8.8
Auxiliary circuit	Oil flow ℓ/min)		51	51
	Oil pressure (bar)		210	210
Capacity	Fuel tank (ℓ)		47	47
	Engine oil (ℓ)		5.2	5.2
	Hydraulic tank (ℓ)		54	54



www.kubota.co.uk

R RANGE

R065HW

The R065HW is an articulated wheel loader featuring oscillating pivot steering and a parallel loader linkage for improved comfort and more accurate loading. Ideal for all types of working conditions.

This model is available with a standard bucket capacity of 0.65m³:

R065HW (cab) with a machine weight of 4675 kg offering a 3450 kg tipping load (straight).



Engine

Powered by a robust and powerful Kubota 47.3 PS diesel engine, which offers low noise, low vibration, and low fuel consumption. The engine fitted in the R065HW has no requirement for a DPF or DOC and meets Stage IIIA for exhaust emissions in Europe.



Versatility

The R065HW features a standard hydraulic quick coupler for fast and efficient changing of front attachments. The front loader utilises a Z-bar linkage with parallel movement, and delivers a powerful breakout force.



Transmission

The hydrostatic transmission features 2-step speed up/down buttons for quick speed changes in order to work at the optimum pace for the task at hand.



Performance

Features include a long dumping reach, high clearance and Kubota's arm tilt/parallel movement that keeps the load upright and steady, even while raising or lowering the lift arm. 100% on demand front and rear differential lock for maximum traction.

The R065HW offers extra lifting capacity, with a 1.7 tonne payload on pallet forks.



Comfort

The R065HW has a spacious air-conditioned cab, with wider entrance, adjustable suspension seat, and improved visibility. The cab offers lower noise levels, and a lower cab height allows the R065HW wheel loaders to fit in tighter spaces and under eaves. All major loader functions are on a single multi-function operating lever that is easy to operate with just one hand.



Safety

ROPS (Roll Over Protective Structure) ISO3471 / FOPS (Falling Objects Protective Structure ISO3449.) Also, for added safety, the R065HW comes as standard with 6 integrated tie down points and a wheel chock.

R RANGE / R065HW

Technical overview

Model		R065HW
Machine weight (cab)	kg	4600
Operating weight (cab)	kg	4675
Standard bucket capacity	m³	0.65
Engine	Manufacturer	Kubota
	Model	Water-cooled V2607-Di-E3
	Horse power (ISO9249)	kW/rpm 34.8 / 2400
		PS/rpm 47.3 / 2400
	Number of cylinders	4
Engine	Displacement	cc 2615
	Type	Hydrostatic transmission
Operational specifications with bucket	Tipping load, straight (ISO14397-1) kg (cab)	3450
	Tipping load, full turn (ISO14397-1) kg (cab)	3020
	Max. lifting capacity (ISO 14397-2) kN	31.4
	Break out force (ISO14397-2) kN	41.8
Operational specifications with pallet fork	Tipping load, full turn (ISO1439-71) kg (cab)	2340
	Max. payload (EN 474-3) 80% kg	1720
	Max. payload (EN 474-3) 60% kg	1400
Traveling	Tire size	12.5-18
	Traveling speed	Forward km/h 0 to 20
		Reverse km/h 0 to 20
	Traction force	kN 29.1
	Front/ rear axle	Differential lock 100% on demand
Auxiliary circuit	Angle of oscillation	Deg. ±8
	Max. flow rate	t /min 53.8
	Max. hydraulic pressure	MPa 18.6



www.kubota.co.uk

R RANGE

R082

Designed with the optimum balance of size, power and comfort, the R082 offers new levels of efficiency and productivity across a wide range of lifting and loading tasks.



Engine

The R082 is powered by a Kubota 47.3 PS diesel engine whilst the R085 features a 62.5 PS Kubota eco-friendly diesel engine which is fitted with a diesel particulate filter (DPF) muffler, complies with Stage III B regulations . Both engines offer low noise, low vibration and low fuel consumption.



Transmission

The R085 has a flexible electronic hydrostatic transmission (E-HST) with four operating modes, each optimised to handle a specific type of loading work: from Normal Mode for everyday load carrying, to Power Mode for 40% extra traction, to Eco Mode for 10-15% more fuel efficiency, and Attachment Mode to maintain a precise attachment speed.



Versatility

The R082 and R085 feature a standard hydraulic quick coupler for fast and efficient changing of front attachments. The front loader utilises a Z-bar linkage with parallel movement, and delivers a powerful breakout force.

R085

The R085 is an articulated wheel loader, designed to get the job done quicker with more comfort. The R085 has a standard bucket capacity of 0.85m³ and is available with a spacious high-visibility cab. Small and powerful, this capable loader has a machine weight of 4790 kg (cab) offering a 3600kg tipping load straight with bucket.



Performance

Features include a long dumping reach and high dumping clearance, making all types of dumping jobs easy. The arm tilt/parallel movement structure also keeps the load upright and steady, even while raising or lowering the lift arm. 100% on demand, front and rear differential lock for maximum traction.



Comfort

A comfortable, spacious high-visibility cab with ergonomic dashboard and weight adjustable suspension seat. A modern, easy-to-read digital display for functions and diagnostics. All major loader functions are on a single multi-function operating lever that is easy to operate with just one hand.



Safety

ROPS (Roll Over Protective Structure) ISO3471 / FOPS (Falling Objects Protective Structure) ISO3449. Also, for added safety, both machines come with 6 integrated tie down points and a wheel chock as standard.

R RANGE / R082/R085

Technical overview

		R082	R085
Machine weight cab		kg 4725	4715
Operating weight cab		kg 4800	4790
Standard bucket capacity		m³ 0.85	0.85
Engine	Manufacturer	Kubota	Kubota
	Model	Water-cooled V2607-Di-E3	Water-cooled V2607-CR-TE4
	Horse power (ISO9249)	kW/rpm 34.8 / 2400	46 / 2400
		PS/rpm 47.3 / 2400	62.5 / 2400
	Number of cylinders	4	4
Displacement		cc 2615	2615
Transmission	Type	Hydrostatic transmission	Electronic hydrostatic transmission
Operational specifications with bucket	Tipping load, straight (ISO14397-1) (cab)	kg 3580	3600
	Tipping load, full turn (ISO14397-1)kg (cab)	3140	3050
	Max. lifting capacity (ISO 14397-2)	kN 37.6	37.6
	Break out force (ISO14397-2)	kN 48.6	48.6
	Tipping load, full turn (ISO1439-71)kg (cab)	2500	2500
Operational specifications with pallet fork	Max. payload(EN 474-3) 80%	kg 2000	2000
	Max. payload(EN 474-3) 60%	kg 1500	1500
	Tire size	12.5-18	12.5-18
Traveling	Traveling speed	Forward km/h 0 to 20	0 to 20
		Reverse km/h 0 to 20	0 to 20
	Traction force	kN 29.1	38.2
	Front/ rear axle	Differential lock 100% on demand	Differential lock 100% on demand
	Angle of oscillation	Deg. ±8	±8
Auxiliary circuit	Max. flow rate	t /min 71.4	67.2
	Max. hydraulic pressure	MPa 20.6	20.6

A Kubota R065 HW wheel loader is shown in profile, working on a gravel surface. The loader is orange and black, with the Kubota logo and model name clearly visible. A driver wearing a red hard hat is visible in the cab. The background features a large white storage tank and a blue industrial building under a clear blue sky.

**Affordability
built in,
value that
lasts.**

Over time, the cost of running a Kubota is remarkably low. As well as Kubota's renowned quality and reliability, you benefit from leading edge engineering, innovative technology, exceptional fuel economy and efficient operation.

The result: low cost of ownership and excellent residual value.

**We put more in, so
you get more out**

First class
local service
you can
rely on.



Warranties STANDARD ON ALL MACHINES

All Excavators	All Wheel Loaders	Track Dumpers
3 Yrs* /3000 Hours	2 Yrs /2000 Hours	1 Yr /1000 Hours

*2 years /2000 hours plus 1 year/1000 hours Kubota Care

www.kubota.co.uk

From the moment you buy a Kubota, you can be assured of first class service from our nationwide network of specialist dealers. Count on them for expert insight, outstanding support and unrivalled professionalism.

By working hand in hand with our dealership network, we make sure that you always receive the best advice and after sales care. Wherever you are, no matter how complex or simple the job may be, you can rely on our dealers to help you to find the right machine to best meet your needs. With Kubota-trained technicians on hand, you can be certain your machine continues to provide exceptional performance, job after job, year after year.

High standards built in

The same high standards that you expect from a Kubota machine you can expect from our dealers too. We insist that our Kubota-trained technicians work in fully-equipped workshops. We also expect all our dealers to make a substantial investment in training, parts and customer service resources. The result: you receive first class customer and after sales service every time.

Kubota Dealer Service Excellence

The quality of our dealer service is continually monitored and assessed, and is recognised with a bi-annual dealer service excellence award based on dealer equipment, facilities, commitment to training and, most importantly, customer service. The Kubota customer satisfaction survey is submitted to customers after every product sold and is used to rate the service department of every Kubota dealer.



Parts that fit.
First time,
every time.

Every Kubota is built to deliver outstanding performance. The same goes for our parts and after sales service.

Every part for every Kubota contributes to its outstanding performance, which is why when you fit Kubota approved parts, you can be assured of the highest standards. Kubota allows for complete peace of mind by providing impeccable levels of quality and engineering, and excellence in delivering unrivalled reliability, efficiency and productivity. Kubota approved parts are also supported by a full 12 month warranty.

With Kubota's world-class logistics delivery network, you can be sure that whatever you may need, Kubota can provide.

RAPID PARTS DISTRIBUTION

From a single component or a maintenance part, to a range of implements and accessories: wherever and whenever you need them, we'll be there.

12-MONTH WARRANTY with every Kubota approved part

For extra peace of mind, all Kubota approved parts feature a full 12 months parts and labour guarantee when fitted by a Kubota dealer.

Kubota quality lubricants

ENGINE OILS ■ TRANSMISSION OILS ■ HYDRAULIC & MULTIFUNCTIONAL OILS ■ COOLANT

Get the best out of your Kubota machine by using Kubota approved, specially formulated oils and lubricants. Kubota approved oils and lubricants enhance the performance and reliability of your Kubota machine. An investment of care and consideration into your Kubota machine allows for your peace of mind.



**flexible finance
made easy**

Financing your Kubota has never been easier. We offer a comprehensive range of affordable, flexible finance options to make Kubota an even better choice.

Hire Purchase

Choose your deposit and spread the cost of ownership with easy payments.

Operating Lease

All the benefits of operating a Kubota without having to own it outright.

Contract Hire

Like an Operating Lease, but with service and maintenance included.

Finance Lease

Spread the VAT over the life of the agreement for tax efficiency.

We're only a call away. Contact your local dealer for details or talk to us today about which option is best for you.

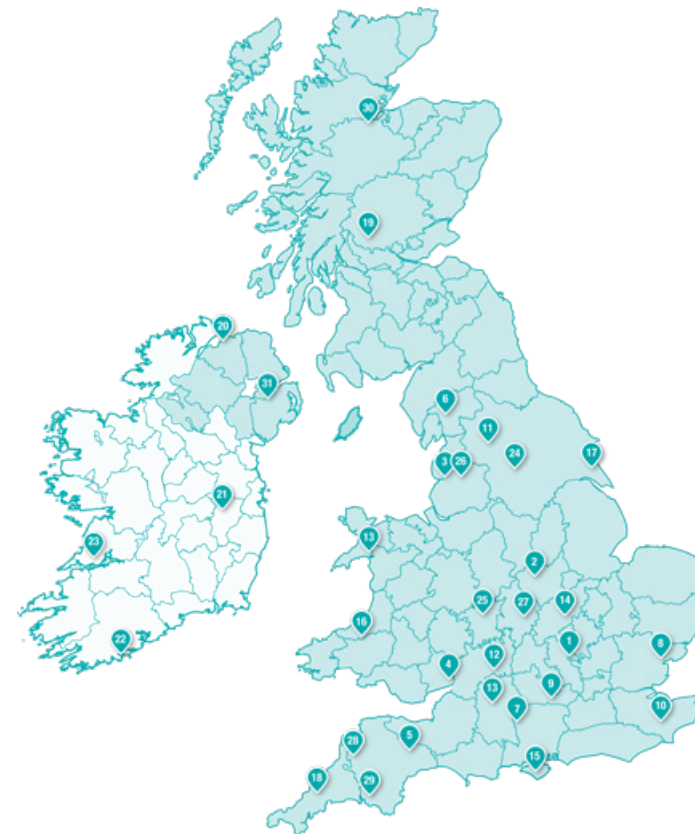
Call: 0345 602 5482

Email: kubotasales@kubota-finance.com

KUBOTA Finance



UK & Ireland Kubota Dealer Network



Construction dealers

- | | | | |
|---|---|---|---|
| 1. Boss Plant Sales Ltd
Unit 23
Airfield Industrial Estate
Cheddington Lane
Long Marston
Tring, Herts
HP23 4QR | 9. Lister Wilder Ltd
White House Farm
Lambs Lane
Spencers Wood
Berkshire
RG7 1HR | 18. Vincent Tractors
Fraddon
St Columb
Cornwall
TR9 6NA | 26. PV Dobsons
Unit 3M Eaton Point,
Eaton Avenue
Matrix Park
Chorley
PR7 7NG |
| 2. BTE Plant Sales Ltd
Elliott House,
85 Ashby Road,
Markfield
Leicestershire
LE67 9UA | 10. Lister Wilder Ltd
Henwood Industrial Estate
Ashford, Kent
TN24 8DH | 19. Molson Young Plant Sales
Lochill Industrial Estate
Dunne
Perthshire
FK16 6AU | 27. Lister Wilder
Southam Road,
Upton
Southam
Warwickshire
Leamington Spa
CV33 9PF |
| 3. BTE (Northern) Plant Sales Ltd
Unit 12
Tomlinson Road,
Leyland
PR25 2DY | 11. P. V. Dobson
Unit 4,
Snaygill Industrial Estate
Skipton
North Yorkshire
BD23 2QR | 20. David Forgie Agricultural Machinery
Liniskally Farm
16 Seacoast Road
Limavady
Co Derry
BT49 9DW | 28. Vincent Tractors
Neet House
West Devon
Business Units
Neet Lane
Holsworthy
Industrial Estate
Ex22 6ES |
| 4. Chepstow Construction Equipment
12 Beacon Business Park
Lodge Way
Portskewett
Monmouthshire
NP26 5PX | 12. Lister Wilder Ltd
Love Lane
Industrial Estate
Cirencester
Gloucestershire
LG7 1YG | 21. FJS Plant
Timahoe East
Naas
Co Kildare
Ireland | 29. Vincent Tractors & Plant
Choakford Corner
Plympton
Devon
PL7 5BB |
| 5. Chepstow Construction Equipment
Unit 17
Hartnoll Business Centre
Posthill, Tiverton
EX16 4NG | 13. Major Owen
Parc Road
Penryhnduraeth
Gwynedd
LL48 6LS | 22. MP Crowley
Hobbs Yard
Curraheen
Cork
Ireland | 30. Molson Young Plant Sales
Tore
Inverness
IV6 7SD |
| 6. PV Dobson & Sons
Ivy House
Levens
Kendal
Cumbria
LA8 8PG | 14. Shellplant
Tittley Bawke Avenue
Earls Barton
Northamptonshire
NN6 0LA | 23. Whelan Plant Sales Ltd
Barefield
Ennis
Co Clare
Ireland | 31. D A Forgies
Unit 9
Blaris Industrial Estate
Lisburn
BT27 5QB
Ireland |
| 7. Harper Plant
Broughtons Yard
Stockbridge Road
Lopcombe Corner
Salisbury, Wiltshire
SP5 1BW | 15. Stubbings Brothers
Chale Green
Ventnor
Isle Of Wight
PO38 2JN | 24. BTE Plant Sales Limited (Leeds)
Carr Crofts Drive
Armley
Leeds | |
| 8. Hosplant Sales Ltd
St Ives Farm Buildings
St Ives Road
Peldon, Colchester
CO5 7QD | 16. Tegfan Garage
Llanllwni
Pencader
Carmarthenshire
SA39 9DU | 25. BTE Plant Sales Limited (West Midlands)
Units 6/7,
The Furlong
Berry Hill Industrial Estate
Droitwich
Worcestershire
WR9 9AH | |

www.kubota.co.uk